

REY1892

PASS THRU W/ SHELF

FEATURES:

1. AUTOMATIC MECHANICAL DOOR INTERLOCK
NO EXTRA HANDLES TO TURN
BOTH DOORS CANNOT BE OPENED SIMULTANEOUSLY,
ONLY ONE DOOR AT A TIME CAN BE OPENED
2. CLOSED CELL SILICONE GASKET ON
DOORS AND WINDOWS
3. 304 STAINLESS STEEL CONSTRUCTION

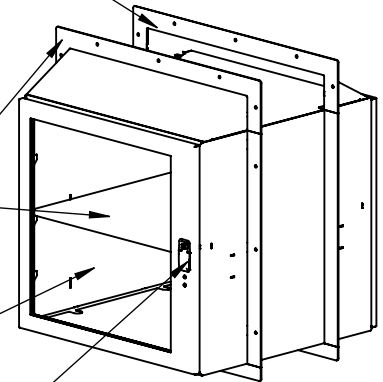
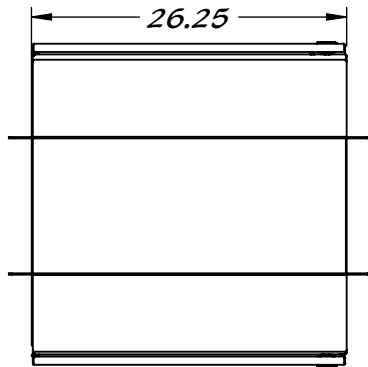
PASS THRU SUPPLIED WITH
FLAT TRIM STRIPS AND BOLT
ON SLANT TOP FOR
OPPOSITE WALL FACE

FLANGE FIXED TO PASS THRU
MOUNTING HOLES FOR 1/4" SCREW

REMOVABLE SHELF

TEMPERED SAFETY GLASS
WINDOW

FLUSH MOUNT LATCH



$\phi .28$
MOUNTING HOLES

2.0
FLANGE

11.25
ADJUSTABLE
+/- 0.19"

CUSTOM SLOPED TOPS
CAN BE MADE TO FIT
YOUR WALL THICKNESS

11.4
23.4
CLEARANCE
WITHOUT
SHELF
11.3

25.8
INSIDE CLEARANCE

22.0
INSIDE CLEARANCE

Property of Reytek Corporation.

Use of this information without the prior consent of Reytek Corporation is strictly forbidden.