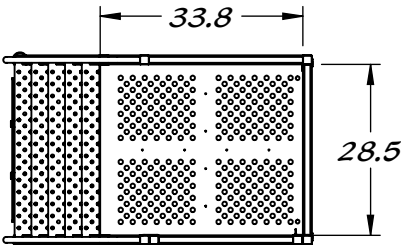


REY1548

ROLLING PLATFORM LADDER

304 STAINLESS STEEL CONSTRUCTION

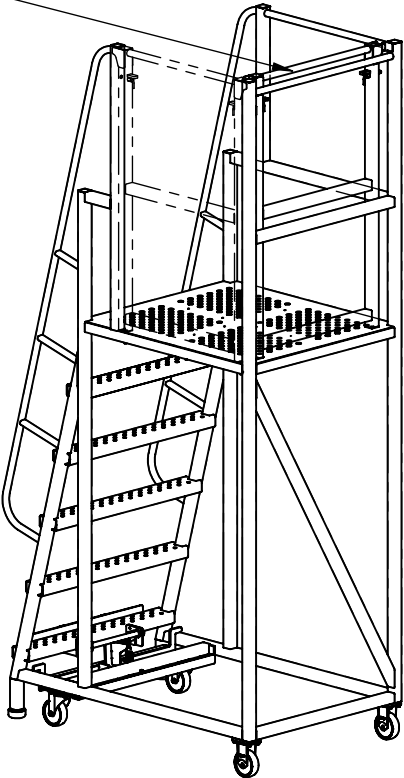
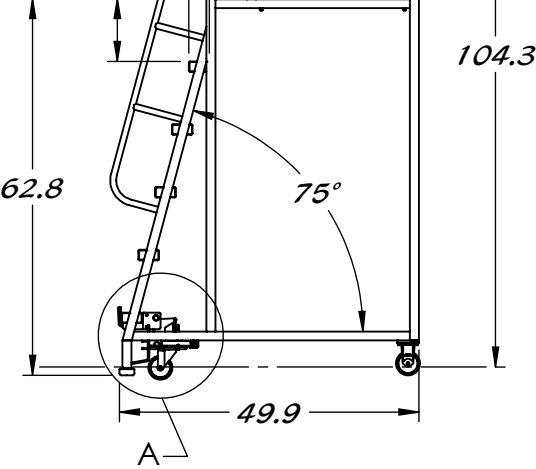
GUARDRAIL IN STOWED POSITION



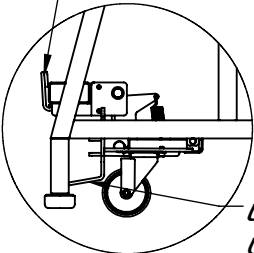
RIGHT SIDE GUARDRAIL REMOVABLE

3.4 STEP DEPTH

10.5 STEP RISE



MECHANISM DROPS LADDER FEET TO FLOOR WHEN OPERATOR STEPS ON FIRST STEP



LOWER FOOT LEVER USED TO RESET MECHANISM TO RE-ENGAGE CASTERS

DETAIL A